

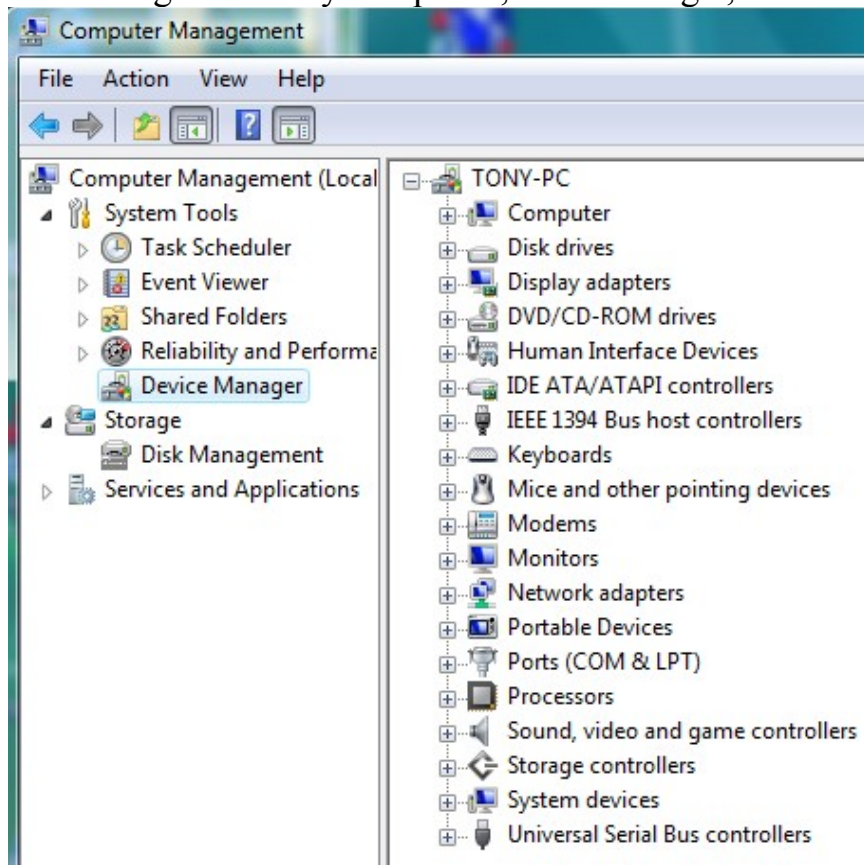
User Menu of POS machine for Magnetic lock

1. Connect cable to the bottom of the lock
2. Turn on the POS machine and insert a blank magnetic card to the lock
3. The Red and Green light on the lock and POS machine flashing one by one until heard a “ Di ” sound.
4. Change another cable to connect POS machine to your PC.
5. Turn on POS machine and log in to your system .
Then go to level B to click Open Record .
6. The Red and green light of POS machine will be
Flashing one by one until heard a “ Di ” sound.
The Open record is opened.

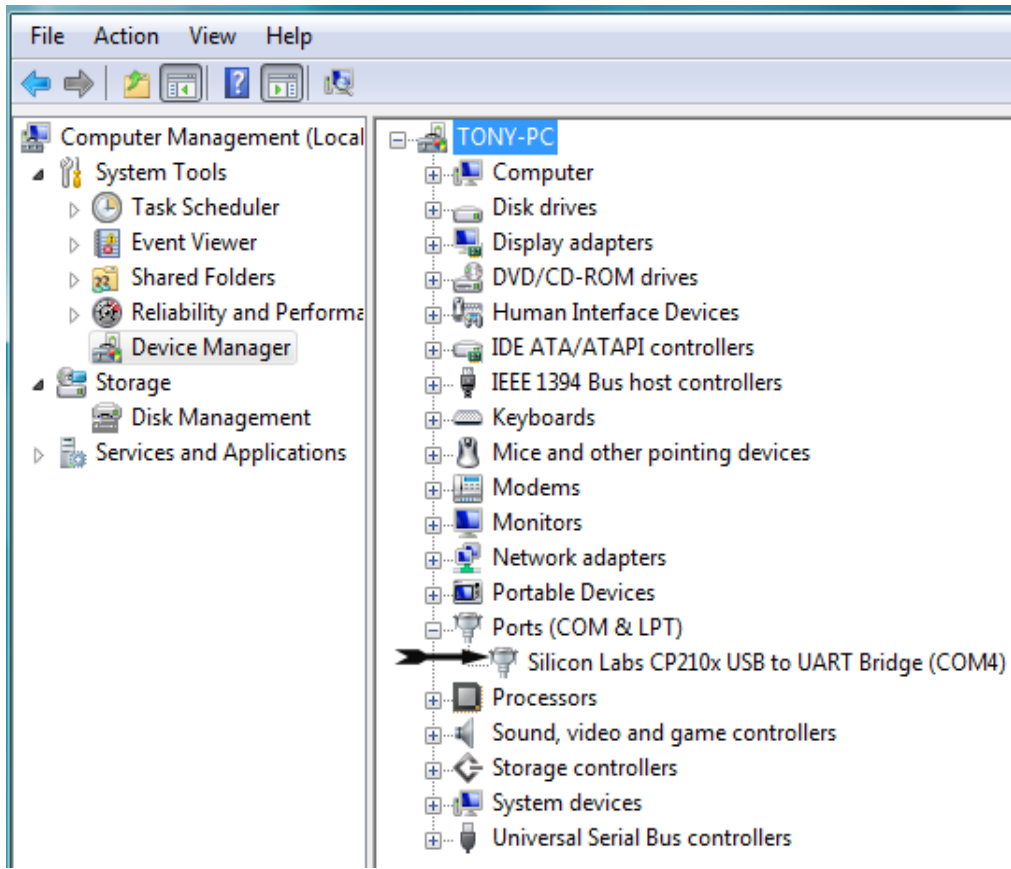
Trouble shooting:

If the software can not communicate with POS machine automatically,
Please do the following step.

1. Download the driver first then connect POS machine to your PC.
2. Right click my computer , click manage , click device manager.



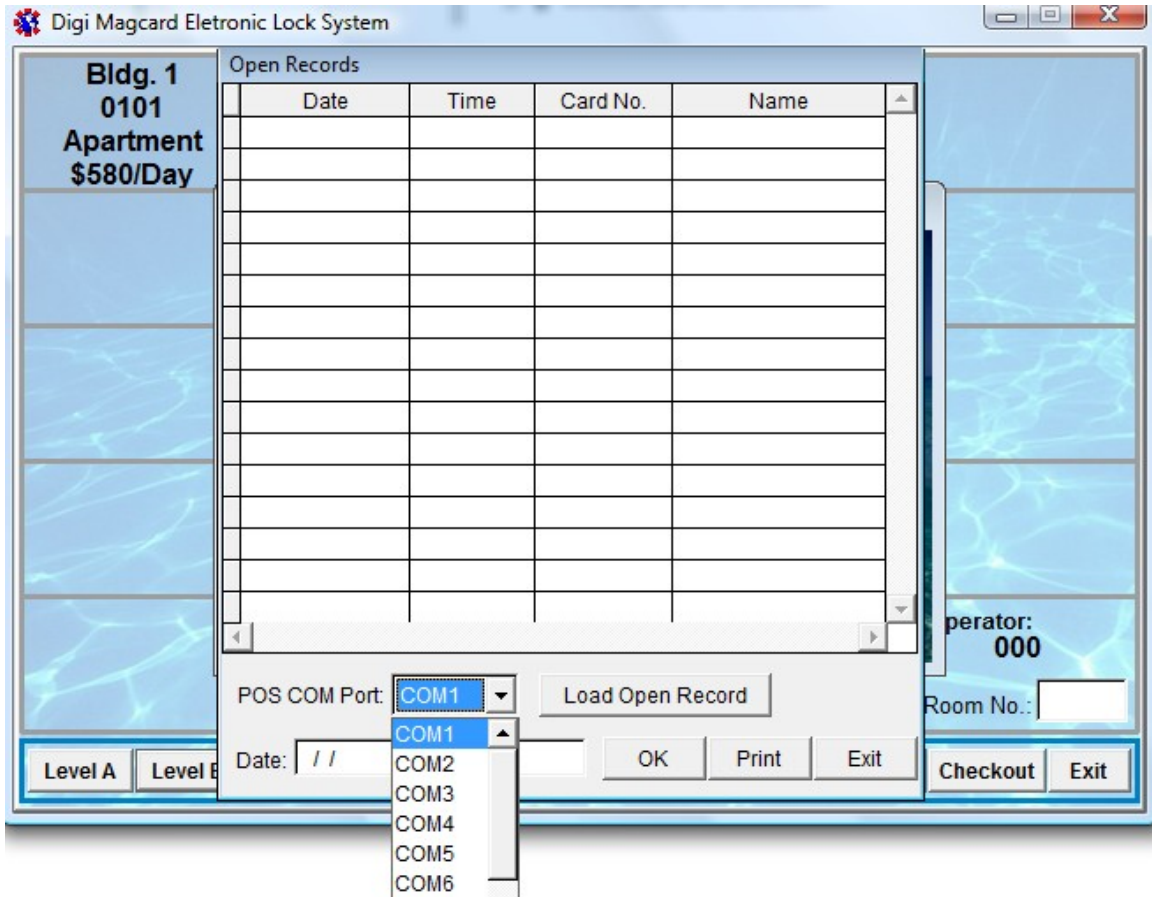
Click Ports (COM&LPT)



If it is COM4. Please log in your software, Click level B. Click Open Recode



Change the POS COM PORT to COM4



After changed the Port, Then click Load Open Record. The Green light will flashing until heard “D” . The Record is opened.

