



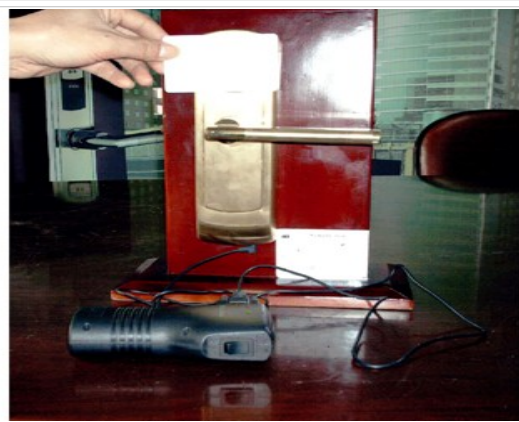
Step 1



Step 2



Step 3



Step 4

### User Menu

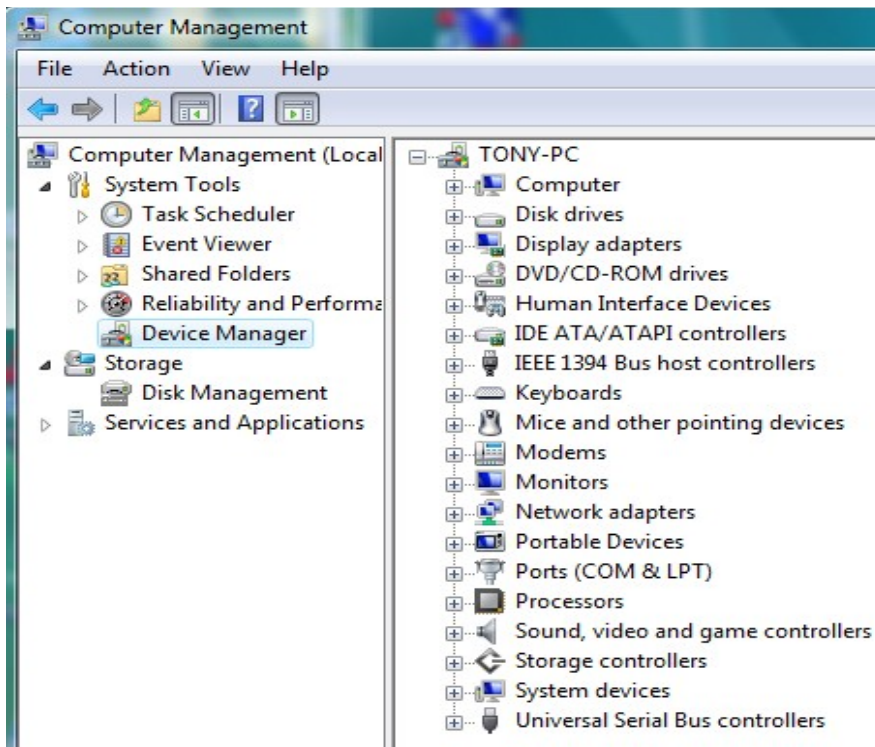
The operation for Prox Card Lock. (For Trail Audit)

- (1) Connect wire to the POS machine. As the Picture No. 1 and No.2
- (2) Connect the wire to the lock and open the power of the POS.
- (3) Use one blank card or white paper staying at the sense area for 3 seconds, the lock red and green light will flash one by one. The audit trail record will start to be loaded.
- (4) After the loading process is done, the lock will make one long sound. This sound means the loading is done.
- (5) Change to use another wire to connect the POS to the computer, enter our card system "level B" and click the " Open record" button, then the audit trail will be shown on the screen.

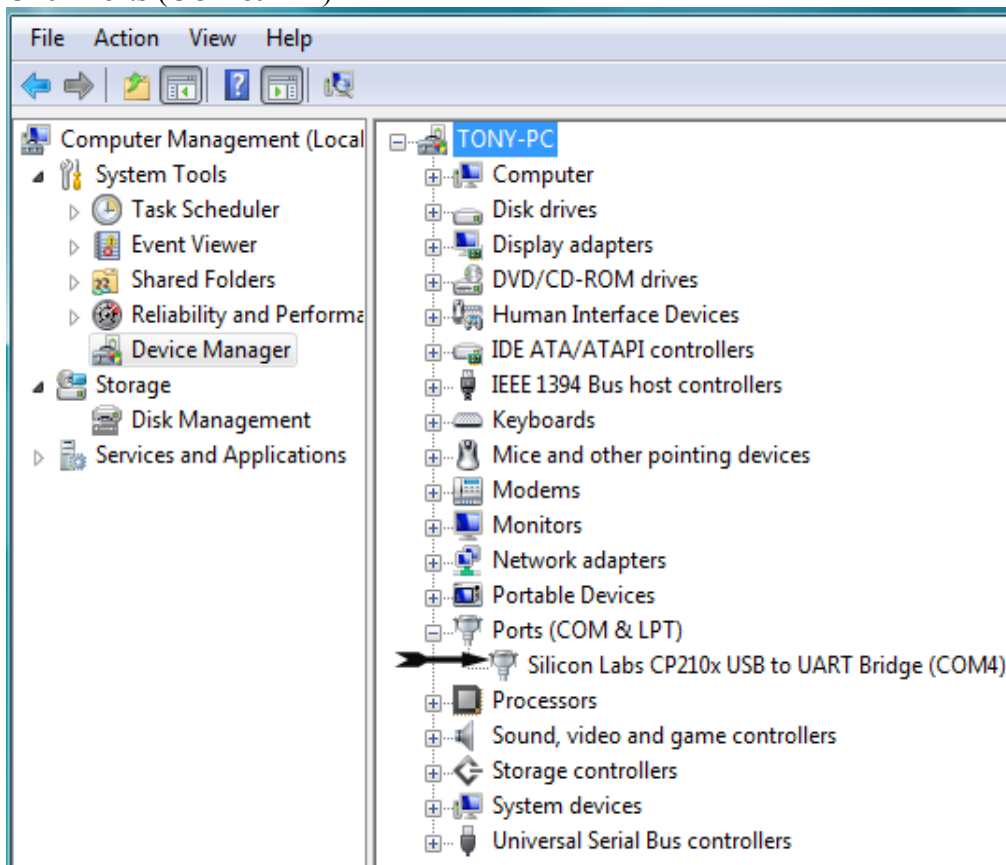
### Trouble shooting:

If the software can not communicate with POS machine automatically, Please do the following step.

1. Download the driver first then connect POS machine to your PC. (If you already downloaded the Silabs Encoder Driver , You do not need to Download it again)
2. Right click my computer , click manage , click device manager.



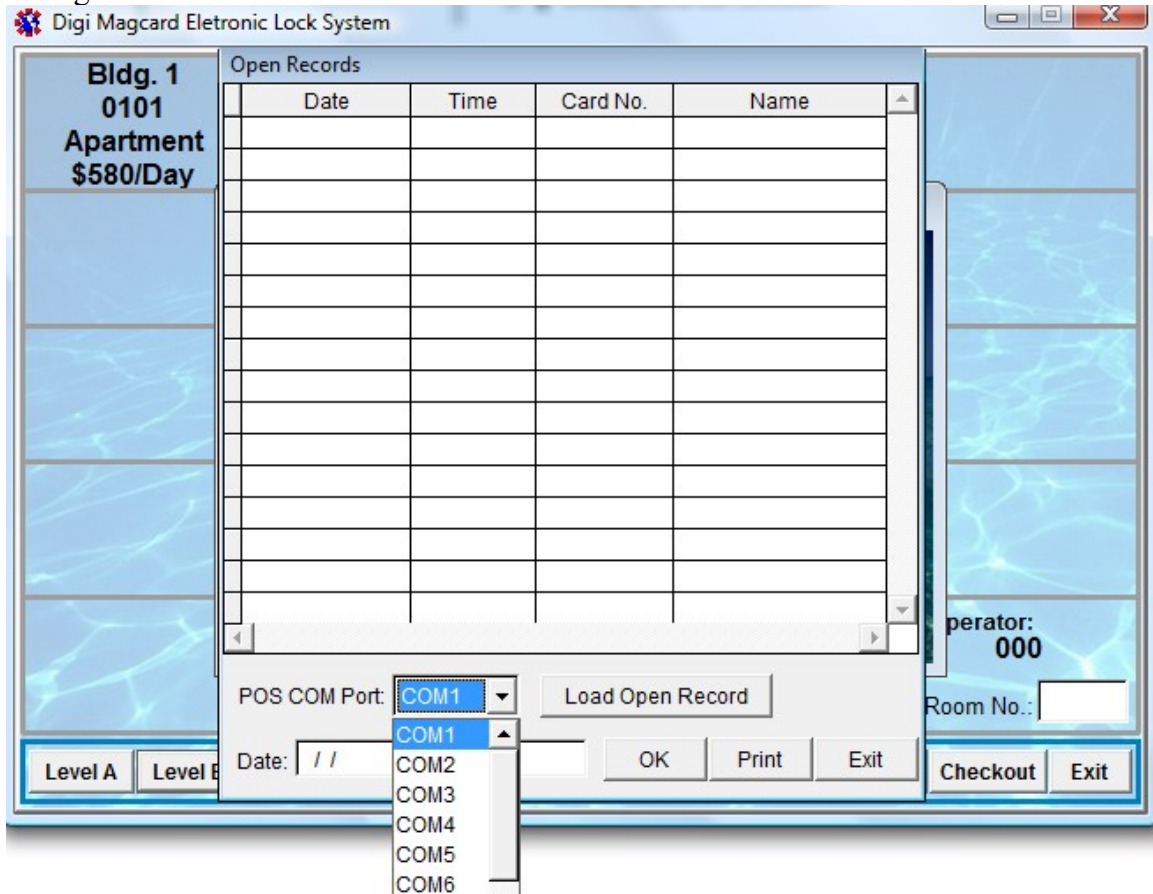
Click Ports (COM&LPT)



If it is COM4. Please log in your software, Click level B. Click Open Recode



Change the POS COM PORT to COM4



After changed the Port, Then click Load Open Record. The Green light will flashing until heard "D" . The Record is opened.

